

# PRICING PAGE

1 of 1

## Standard Features

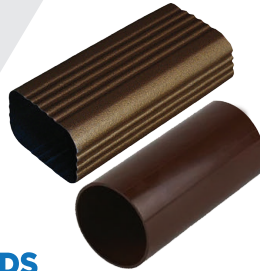
Base machine comes with single overhead reel holder, urethane drive rollers, manual quadrashear, run out table, limit switch for length control.

### OPTIONS:

- Pneumatic auto-shear
- Hydraulic auto-shear
- DSEL - Automatic downspout & Elbow machine
- PLC length and batch controller

## Base Downspout Machine DS

Portable, Stationary, Commercial, and Industrial Downspout machines are engineered for most efficient cost benefit ratio. It's stable, efficient design optimizes workflow, minimizes downtime, and chances overall production. Materials: Aluminum **.017 - .024"**, steel **29-26 ga**, copper **16 oz**. Material width depends on size, standard sizes: 2x3, 2 5/8 x 2 5/8, 3x3, 3x4, 4x5, Round 3", 4".



**DS**  
Round or Rectangular Profiles

**DS23**

**\$34 500**

**DS33**

**\$37 500**

**DS34**

**\$42 340**

**DS45**

**\$47 500**

**DS3R**

**\$42 950**

**DS4R**

**\$46 950**



**HS**  
Hydraulic Auto-Shear with Power Unit

**\$10 000**

**PS**  
Pneumatic Auto-Shear

**\$4 500**



**EM**  
Embossor Machine included in line

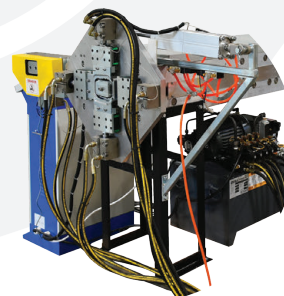
**\$16 000**

**PLC**  
PLC Controller

**\$9 500**

**DSEL**  
Downspout/Elbow Combo

**\$49 500**



  
102 East Railroad Ave.,  
Knoxville, PA 16928

  
Phone: +1 814 326 4121

  
info@stangroup.us

